

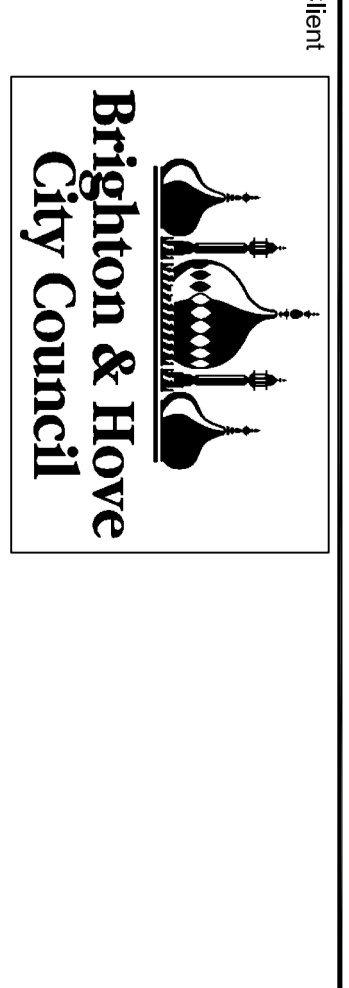
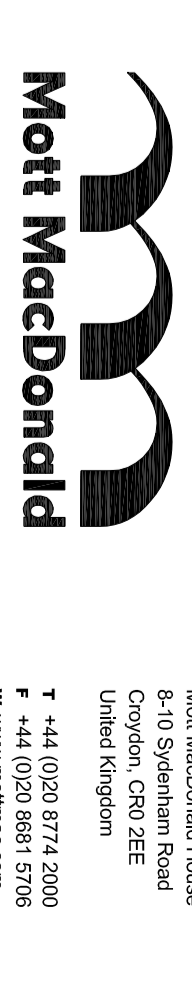
DRAFT
FOR DISCUSSION ONLY

Key to symbols

- Existing
- Proposed
- Possible Footway Cutback
- Proposed Footway Buildout

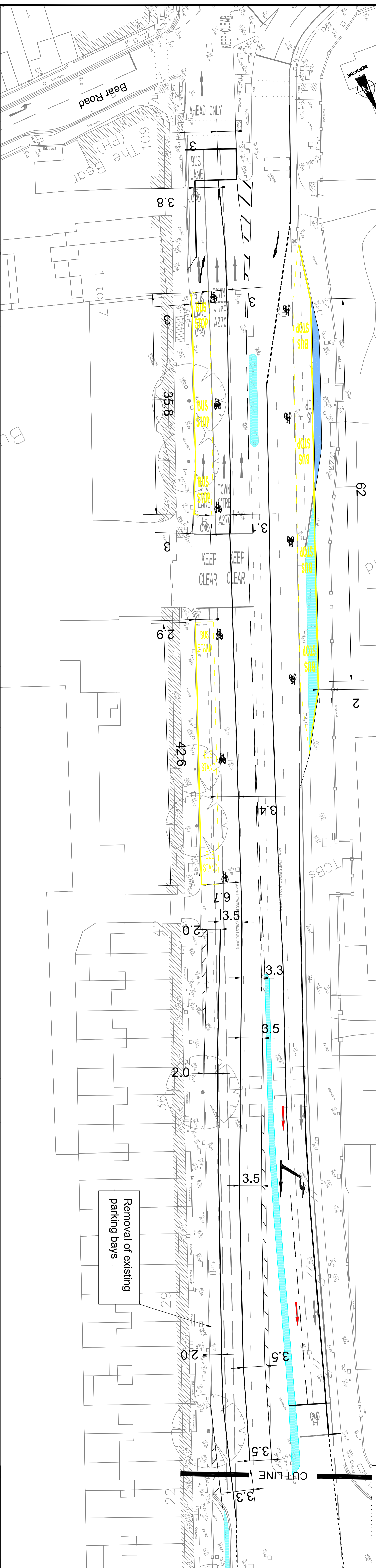
Reference drawings

07	22/09/2012	DW	Seventh Issue - Loading Bays Amended	RH	RH
08	18/09/2012	BB	Seventh Issue - Loading Bays Amended	RH	RH
09	18/09/2012	BB	Seventh Issue - Loading Bays Amended	RH	RH
10	18/09/2012	BB	Seventh Issue - Loading Bays Amended	RH	RH
11	18/09/2012	BB	Seventh Issue - Loading Bays Amended	RH	RH
12	18/09/2012	BB	Seventh Issue - Loading Bays Amended	RH	RH
13	18/09/2012	BB	Seventh Issue - Loading Bays Amended	RH	RH
14	18/09/2012	BB	Seventh Issue - Loading Bays Amended	RH	RH
15	18/09/2012	BB	Seventh Issue - Loading Bays Amended	RH	RH
16	18/09/2012	BB	Seventh Issue - Loading Bays Amended	RH	RH
17	18/09/2012	BB	Seventh Issue - Loading Bays Amended	RH	RH
18	18/09/2012	BB	Seventh Issue - Loading Bays Amended	RH	RH
19	18/09/2012	BB	Seventh Issue - Loading Bays Amended	RH	RH
20	18/09/2012	BB	Seventh Issue - Loading Bays Amended	RH	RH
21	18/09/2012	BB	Seventh Issue - Loading Bays Amended	RH	RH
22	18/09/2012	BB	Seventh Issue - Loading Bays Amended	RH	RH
23	18/09/2012	BB	Seventh Issue - Loading Bays Amended	RH	RH
24	18/09/2012	BB	Seventh Issue - Loading Bays Amended	RH	RH
25	18/09/2012	BB	Seventh Issue - Loading Bays Amended	RH	RH
26	18/09/2012	BB	Seventh Issue - Loading Bays Amended	RH	RH
27	18/09/2012	BB	Seventh Issue - Loading Bays Amended	RH	RH
28	18/09/2012	BB	Seventh Issue - Loading Bays Amended	RH	RH
29	18/09/2012	BB	Seventh Issue - Loading Bays Amended	RH	RH
30	18/09/2012	BB	Seventh Issue - Loading Bays Amended	RH	RH
31	18/09/2012	BB	Seventh Issue - Loading Bays Amended	RH	RH
32	18/09/2012	BB	Seventh Issue - Loading Bays Amended	RH	RH
33	18/09/2012	BB	Seventh Issue - Loading Bays Amended	RH	RH
34	18/09/2012	BB	Seventh Issue - Loading Bays Amended	RH	RH
35	18/09/2012	BB	Seventh Issue - Loading Bays Amended	RH	RH
36	18/09/2012	BB	Seventh Issue - Loading Bays Amended	RH	RH
37	18/09/2012	BB	Seventh Issue - Loading Bays Amended	RH	RH
38	18/09/2012	BB	Seventh Issue - Loading Bays Amended	RH	RH
39	18/09/2012	BB	Seventh Issue - Loading Bays Amended	RH	RH
40	18/09/2012	BB	Seventh Issue - Loading Bays Amended	RH	RH
41	18/09/2012	BB	Seventh Issue - Loading Bays Amended	RH	RH
42	18/09/2012	BB	Seventh Issue - Loading Bays Amended	RH	RH
43	18/09/2012	BB	Seventh Issue - Loading Bays Amended	RH	RH
44	18/09/2012	BB	Seventh Issue - Loading Bays Amended	RH	RH
45	18/09/2012	BB	Seventh Issue - Loading Bays Amended	RH	RH
46	18/09/2012	BB	Seventh Issue - Loading Bays Amended	RH	RH
47	18/09/2012	BB	Seventh Issue - Loading Bays Amended	RH	RH
48	18/09/2012	BB	Seventh Issue - Loading Bays Amended	RH	RH
49	18/09/2012	BB	Seventh Issue - Loading Bays Amended	RH	RH
50	18/09/2012	BB	Seventh Issue - Loading Bays Amended	RH	RH

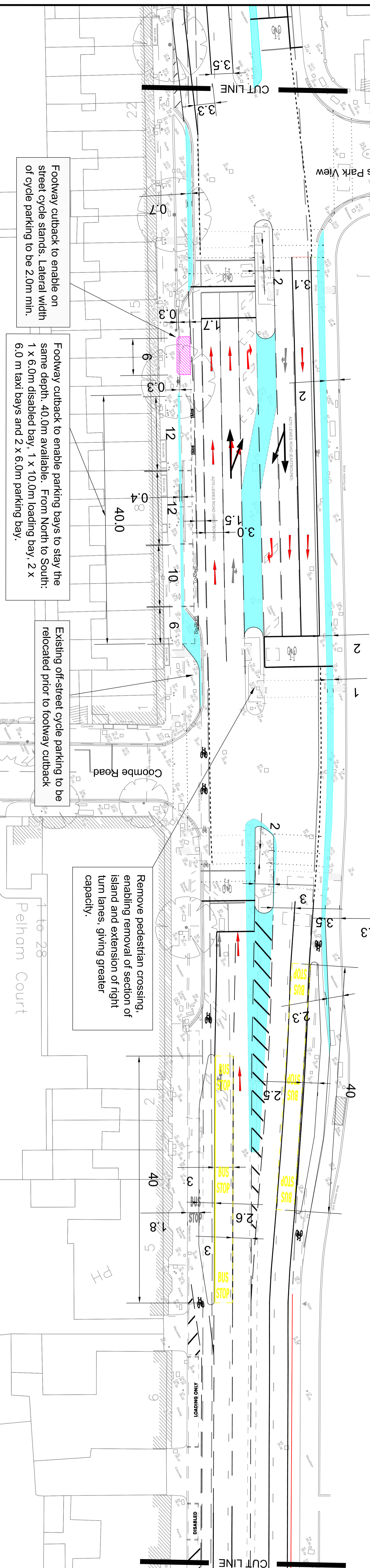


Designed	D Walker	Eng check	
Drawn	D Walker	Coordination	
Day check	Rison	Approved	
Scale at A0	1:250	PRE	P7
Drawing Number	MMD-312872-C-DR-0006		

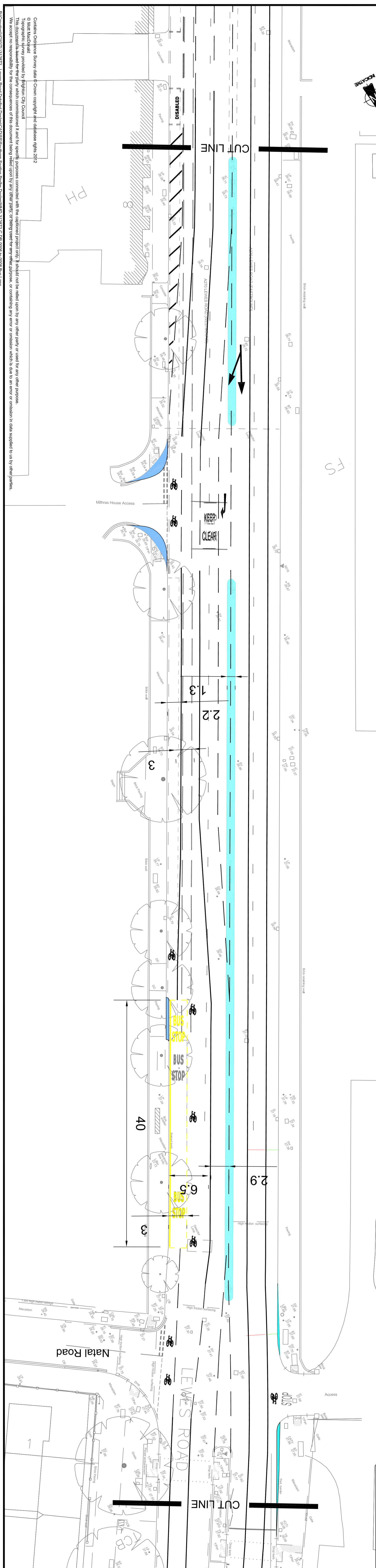
View 1



View 2



View 3



Copyright © Mott Macdonald 2012. All rights reserved. This drawing is the property of Mott Macdonald and is not to be reproduced, stored in a retrieval system, or transmitted in any form or by any means, electronic, mechanical, photocopying, recording, or by any information storage and retrieval system, without the prior written permission of Mott Macdonald. The information contained in this drawing is for the use of the client only and is not to be used for any other purpose. The client is responsible for ensuring that the information contained in this drawing is accurate and up to date. Mott Macdonald is not responsible for any errors or omissions in this drawing. The information contained in this drawing is for the use of the client only and is not to be used for any other purpose. The client is responsible for ensuring that the information contained in this drawing is accurate and up to date. Mott Macdonald is not responsible for any errors or omissions in this drawing.

